

**TECHNICAL DATA**

**SECURITY CLOSINGS**

N°1 top lateral diverter  
 N°1 low lateral diverter  
 N°4 fixed bolts



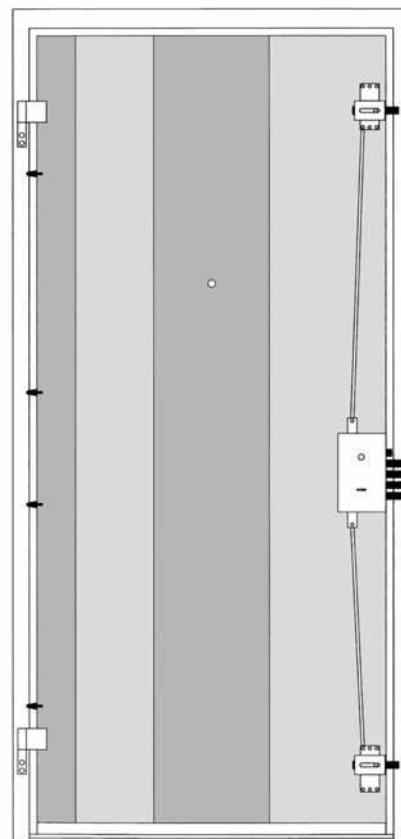
**TECHNICAL CHARACTERISTICS**

**INSIDE STRUCTURE** in pickled sheet 10/10 thick, insulated with polythene and omega shaped reinforcement.

**FRAME** 20/10 thick, press bent and powder varnished colour similar Ral 8019 (brown).

**COUNTERFRAME** 25/10 thick, press bent and powder varnished colour similar Ral 8019 (brown).

**WEIGHT** leaf + frame = 70 Kg.



Requirements	Certificate	Performance
<b>Burglar resistance</b>	201505	cl.2
<b>Noise reduction</b>	204269	32 dB
	204272 with seal on the frame M10	37 dB
<b>Air permeability</b>	201373 and 201374	cl.2
<b>Water resistance</b>	201374	cl.0
<b>Wind resistance</b>	201373 and 201374	cl.3
<b>Thermal insulation</b> $U = W/m^2K$	823/08	1 leaf without windows installed behind brickwork with: internal cover min. 6 mm thick external cover min. 6 mm thick
		1,68

**STANDARD CHARACTERISTICS**

Board stop panel external and internal in prevarnished brown

Pavement draught excluder

Seal on the leaf

Spy hole grand angle

Opening side: push right or left.

Handle in “Bronze” anodized aluminium or in “Silver” anodized aluminium in the following variants:

Fixed knob + elongated handle

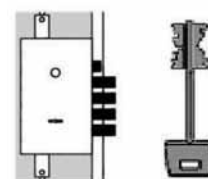
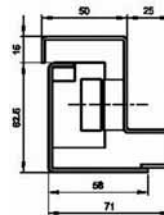
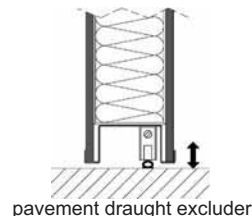
Fixed knob + egg shaped handle

Egg shaped handle + elongated handle

Double elongated handle

Double egg shaped handle.

Packaged in bubble wrapped carton box.



**LOCK**

Lock double sage recodable

3 keys + 1 site key.